

Working in or near rivers and lochs

Ensure that you have the appropriate authorisation to carry out the activity and that you know and follow the rules of the authorisation.

SEPA is here to help, please contact us for any advice.

What you must do:

Ensure that you don't work if fish are spawning or young fish are waiting to emerge.

- Check exact times with your local fishery board, but in general, avoid end October to start May.



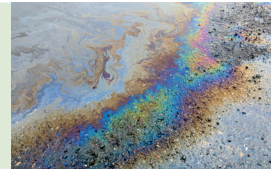
Use measures to prevent downstream pollution e.g.

- Filter materials to trap silt, such as silt curtains.
- Minimise the time the works will take.
- Schedule works during drier periods and avoid working when heavy rain is due.



Prevent any oil from entering the river and contain spillages e.g.

- Refuel machinery away from watercourses.
- Store oil/fuel in bunded area(s).
- Use plant nappies and keep spill kits onsite.



Avoid the spread of invasive non-native species.

- Check banks and in water for invasive species.
- Use biosecurity measures.



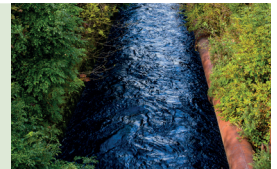
Keep vehicles out of the river or loch where possible.

- Work from the bank side if you can.
- Be aware of any protected species on banks and in water (e.g. freshwater pearl mussels).



Minimise damage to the bed and banks. Always reinstate vegetation.

- Minimise vegetation removal.
- Re-seed banks with native vegetation or cover with biodegradable matting.



If you have an accident:

Stop

Prevent further pollution (e.g. stop fuel spill, remove machinery from water).



Manage

Contain any polluting matter (e.g. use oil spill kits, absorbent material, put in silt curtains).



Report

Report incident to SEPA.
Pollution Hotline
0800 80 70 60
24 hrs a day, 7 days a week

Environmental compliance is non-negotiable. SEPA's enforcement toolkit is wide ranging, from verbal and written warnings, to fixed and variable monetary penalties, and in the most serious cases, a report to the Procurator Fiscal.